



# Parent's Guide to **Accelerated Reader**<sup>™</sup>

---

QUESTIONS AND ANSWERS

POWERED BY  
Renaissance Place<sup>™</sup>  
**REAL TIME**

**RENAISSANCE**<sup>™</sup>  
**LEARNING**  
Accelerating learning for all

[www.renlearn.co.uk](http://www.renlearn.co.uk)

Your child will be participating in the Accelerated Reader (AR™) program. This guide is designed to answer your questions about AR. If you have additional questions, please feel free to contact your child's teacher or visit the Accelerated Reader Website at [www.renlearn.co.uk](http://www.renlearn.co.uk).

## What is Accelerated Reader (AR)?

AR is a computer program that helps teachers manage and monitor children's independent reading practice. Your child picks a book at his/her own level and reads it at his/her own pace. When finished, your child takes a short quiz on the computer. (Passing the quiz is an indication that your child understood what was read.) AR gives both children and teachers feedback based on the quiz results, which the teacher then uses to help your child set targets and direct ongoing reading practice.

Children using AR choose their own books to read, rather than having one assigned to them. This makes reading a much more enjoyable experience as they can choose books that are interesting to them.

Teachers and librarians help your child choose books at an appropriate reading level that are challenging without being frustrating, ensuring that your child can pass the quiz and experience success.

If your child does not do well on a quiz, the teacher may help him/her:

- Choose another book that is more appropriate.
- Ask more probing questions as your child reads and before taking a quiz.
- Pair your child with another student, or even have the book read to your child.

In most cases, children really enjoy taking the quizzes. Since they are reading books at their reading and interest levels, they are likely to be successful. This is satisfying for most children. Best of all, they learn and grow at their own pace.

## How much will my child read during the school day?

According to research, children who read at least 20 minutes a day with a 90% comprehension rate (average percentage correct) on AR quizzes see the greatest gains. Therefore, your child will have at least 20 minutes set aside for reading during each school day.

## How can I help my child become a better reader?

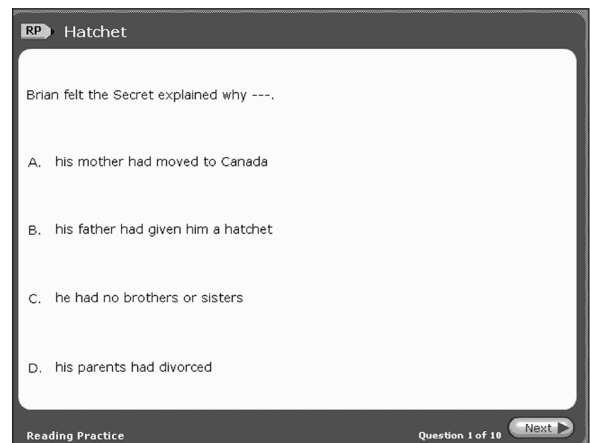
As with anything, performance improves with practice. Encourage your child to read at home. Create a culture of reading in your household by reading with your child, starting a home library, visiting your local library or bookshop on a regular basis, letting your child see you reading and discussing books that each of you have read. When reading with your child, stop and ask questions to be sure your child is comprehending what is read. Reading with your child, no matter what the child's age, is an important part of developing a good reader, building a lifelong love of reading and learning and creating a loving relationship between you and your child. Make learning a family affair!

## What if my child does not like reading?

Using Accelerated Reader, your child will choose the books he/she wants to read. The teacher will make certain the book is at the right level so that after completing the book, your child should do well on the AR Reading Practice Quiz. Success on the quiz will encourage your child to read more. With guidance from the teacher and success, even students who say they do not like reading will develop a love of reading.

## Will my child have to read a book I do not want him/her to read?

No. There are many choices of books at your child's level. He/she will never be forced to read a book you find questionable.



*A Sample Quiz Question*

## I am concerned that my child will be unfairly compared to others.

Then you will really like AR because it helps the teacher work with each child individually. Students using AR are encouraged to progress at their own pace and set their own targets with the help of the teacher. The aim of AR is for all children to succeed in achieving their targets.

## How does the school determine my child's reading level?

Teachers determine your child's reading level in one of three ways: a STAR Reading™ test, a reading age estimation from a standardised test or by using their best professional judgment based on their knowledge of your child.

## What is a STAR Reading test?

STAR Reading is a computerised reading assessment that uses computer-adaptive technology. Questions continually adjust to your child's responses. If the child's response to a question is correct, the difficulty level of the next question is increased. If the child misses a question, the difficulty level of the next question is reduced. The test uses multiple-choice questions and takes approximately 10 minutes.

## What is an ATOS book level?

Book levels are reported using the ATOS™ readability formula and represent the difficulty of the text. For example, an ATOS book level of 4.5 means that the text could likely be read by a student whose reading skills are at the level of a typical fifth-year student.

## What are ATOS 100 and ATOS 2000?

Renaissance Learning™ strives to make it easier for schools to use Accelerated Reader, even if they use book levels based on readability formulas other than ATOS. Therefore, Renaissance Learning has created two alternate book levels based on the Degrees of Reading Power™ and the Lexile Framework® scales. These alternate book levels are named ATOS 100 and ATOS 2000 in the software. Schools have the option of whether or not to use them, and schools can rename them. ATOS 100, the 100-point scale that Renaissance Learning created, is a transformation of a book's ATOS level to a scale that is similar—but not identical—to the Degrees of Reading Power (DRP) scale. Renaissance Learning has also created ATOS 2000, a 2,000-point scale which is a transformation of a book's ATOS level to a scale that is similar—but not identical—to the Lexile scale.

## What if my school uses Lexiles?

Schools that use the Lexile readability formula to report book levels can still use Accelerated Reader. Renaissance Learning has created ATOS 2000, a 2,000-point scale that is similar—but not identical—to the Lexile scale.

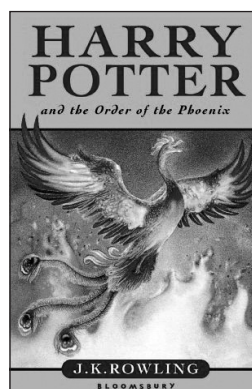
## What is a Zone of Proximal Development (ZPD)?

In independent literature-based reading, ZPD is the range of books that will challenge a child without causing frustration or loss of motivation. Your child will receive a ZPD range after taking a STAR Reading test or teachers can use their best professional judgment to determine a ZPD. It is important for children to read with a high degree of comprehension and within their ZPDs. ZPDs should be adjusted based on the needs of your child.

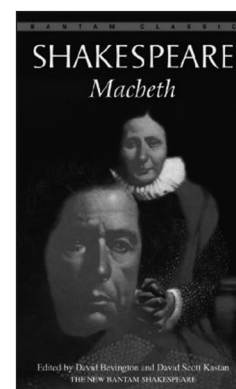
## What are points?

Every book that has an AR Reading Practice Quiz is given a point value. AR points are computed based on the difficulty of the book (ATOS readability level) and the length of the book (number of words).

Children earn points, or a portion of a book's points, depending on how well they do on the Reading Practice Quiz. For example, a child who takes a 5-question quiz on a book worth 1 point will earn 1 point for 5 correct answers (100%), 0.8 point for 4 correct answers (80%), etc. A child who reads a book worth 5 points and takes a 10-question quiz will earn 5 points for 10 correct answers (100%), 4.5 points for 9 correct answers (90%), etc. A child needs to pass a quiz with a score of 60% or higher to earn points.



44 pt. (257,154 words)



4 pt. (19,048 words)

You may notice that some popular books have more points assigned to them than some classic pieces of literature. J.K. Rowling's *Harry Potter and the Order of the Phoenix*, for example, is a 44-point book while Shakespeare's *Macbeth* is a

4-point book. Keep in mind that this does not mean we think *Harry Potter and the Order of the Phoenix* is a better book or more worthwhile to read than *Macbeth*, only that—at 257,154 words versus 19,048 words—it is much longer and provides more reading practice time.

### How are Accelerated Reader point targets set?

The Target-Setting Chart provides guidelines for the approximate number of AR points children should be able to earn depending on how much time they read and their reading level. Monitoring AR points earned by children and comparing them to the guideline values listed on the Target-Setting Chart enables your child's teacher to determine how well your child is using the time provided for reading practice.

### How many Accelerated Reader quizzes are there?

There are over 16,000 AR quizzes available, with more being written every month.

### What kinds of quizzes are there?

Accelerated Reader includes several types of quizzes designed to support the development of several reading skills. Quiz types include:

**Reading Practice Quizzes** are the most common type of assessment in AR. The purpose of these quizzes is to determine whether your child has read a book, to measure your child's literal comprehension of the book and to provide immediate feedback. Each Reading Practice Quiz consists of 5, 10 or 20 multiple-choice questions depending on book level and length.

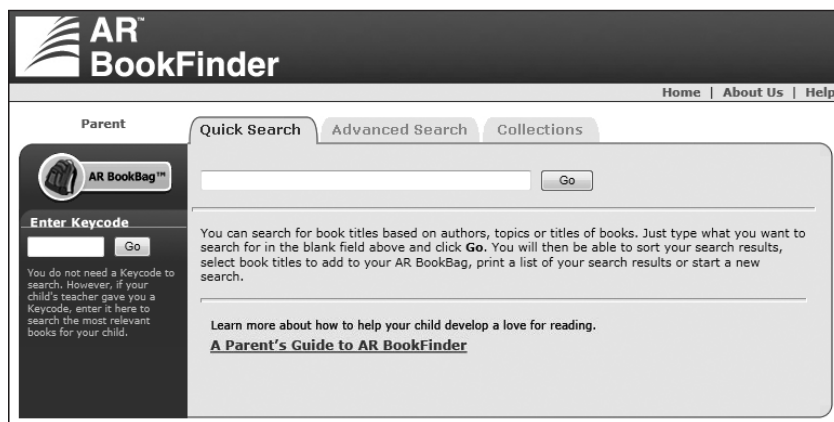
**Recorded Voice Quizzes** are designed for beginning readers and students learning English. They are professionally recorded by a narrator who reads the quiz questions and answer choices as they appear on screen.

**Vocabulary Practice Quizzes** measure a child's command of vocabulary words encountered while reading. They are designed to reinforce vocabulary acquisition, assist with individualising vocabulary instruction and generate your child's interest in words through authentic, in-context literature experiences. Quizzes include 5, 10 or 15 words from a particular book as well as review words from previously read books.

**Literacy Skills Quizzes** are designed to give your child's teacher information on specific reading skills. Questions are randomly generated from a 36- or 60-item bank resulting in 12 or 24 quiz questions. Due to item-bank technology, Literacy Skills Quizzes can be taken up to three times. Quiz questions are based on 24 specific, higher-order reading comprehension skills.

### How will I know if a book has an AR quiz?

To know which quizzes your school has available, contact your child's teacher or librarian. You can also visit the AR BookFinder™ at [www.arbookfind.co.uk](http://www.arbookfind.co.uk) to conduct a search of all available books with AR quizzes.



### How can I help my child find books that are interesting to him or her?

Visit [www.arbookfind.co.uk](http://www.arbookfind.co.uk) and click **Advanced Search**. By conducting an advanced search, you can generate book lists that contain titles based on the criteria you enter such as book level, topic, interest level, fiction/nonfiction, etc.

## My child's teacher put a book list on the Web. How do I access it?

Log onto AR BookFinder at [www.arbookfind.co.uk](http://www.arbookfind.co.uk). Enter the keycode that the teacher gave to your child and click **Go** to access the Teacher List created by your child's teacher.

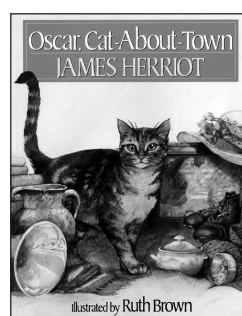
## Is it OK for my child to read outside of his/her reading level?

Just because a child can read the words in a book does not mean the content is appropriate. The interest level of the material must be considered. Interest level is based on content—a book's themes and ideas—and indicates for which age group a book is appropriate. The chart below shows which ages fall into each interest level.

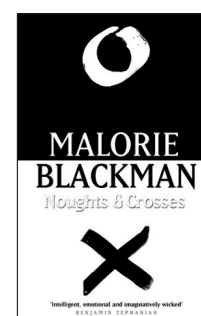
Interest Level	Year Level
LY—Lower Years	Ages 5–8
MY—Middle Years	Ages 9–13
UY—Upper Years	Ages 14 and above

*These are recommendations. It is the responsibility of teachers, librarians and parents to use their best judgment when guiding children to appropriate books.*

In many cases, a book's interest level coordinates with its book level. Many books, however, have a low book level but are appropriate for upper years and vice versa. For example, both *Oscar, Cat-About-Town* by James Herriot and *Noughts & Crosses* by Malorie Blackman have a book level of 4.0 since both have short sentences and vocabulary that is simple. *Noughts & Crosses* is intended for older pupils; therefore, it is tagged as Upper Years, while *Oscar, Cat About-Town* is tagged as Lower Years.



Book Level: 4.0  
Interest Level: LY



Book Level: 4.0  
Interest Level: UY

## My child already does well in school. Why does he/she need this?

Even if a child is gifted at playing a musical instrument, the child has to practice to develop his or her talent. Bright children, like all children, need to be challenged. Teachers using AR software in their classrooms find it easy to guide each student to books that give the child both challenge and success, regardless of the child's level.

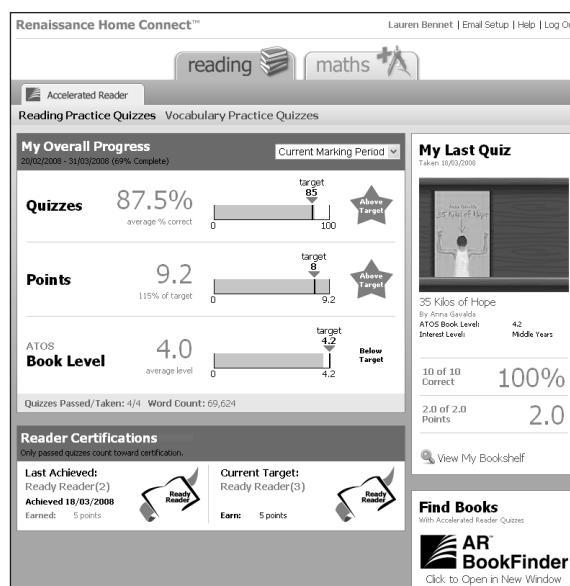
## My child is not a strong reader. Can he/she still use Accelerated Reader?

Accelerated Reader helps all children become better readers, from students with special needs to those who are gifted and talented. When children read books at an appropriate level, they experience success. Furthermore, teachers work with children to set appropriate targets based on each child's reading level.

## How will I know how my child is doing?

A TOPS Report prints automatically after a child takes a quiz to give you feedback on your child's understanding of the book and shows cumulative data for the marking period and school year. The TOPS Report is sent home with your child. You should review the report, sign it and send it back to school with your child.

You can access your child's AR information in Renaissance Home Connect™ from any Web-enabled computer. You must first gain access to the program from the school. Once in the program, you can view your child's progress toward targets, points and books read. You can also access AR BookFinder to search for titles of interest. You can only access information about your child.



Renaissance Home Connect

### **What if I have more than one child using Accelerated Reader?**

If you have more than one child in your home using AR Advantage, the information contained in the reports is only for the child you choose to view. You must request access to the information for each of your children.

### **What if I have questions about using Renaissance Home Connect?**

After logging in, click **Help** in the upper right-hand corner or contact your child's school.